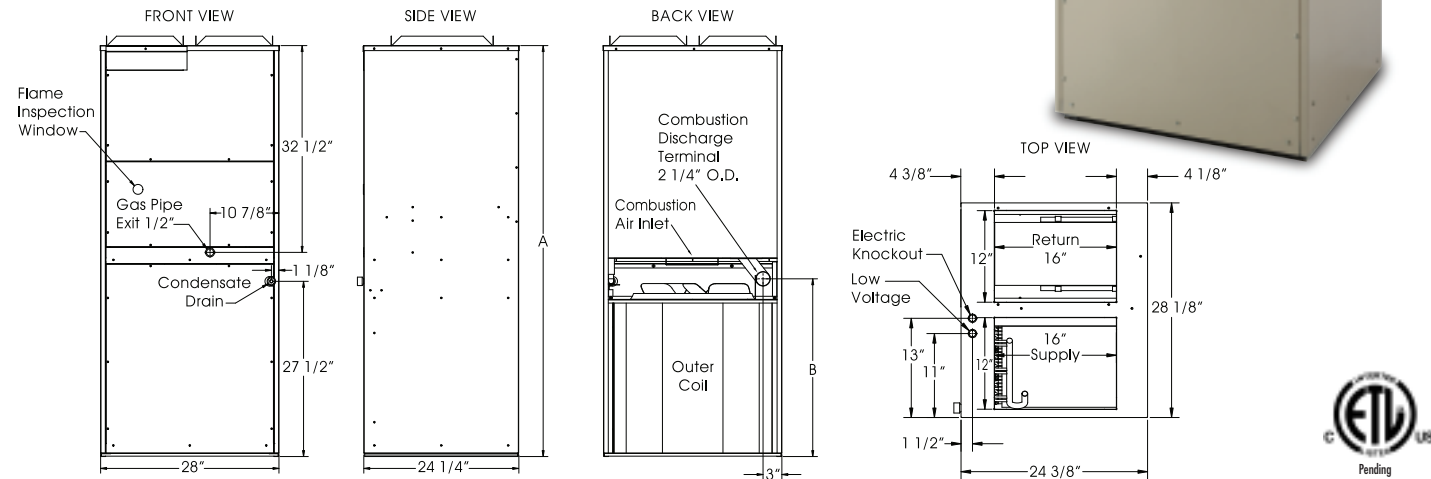


**Suburban**  
**DynaPack™**

*Designed And Built To Perform With Efficient Reliability.*

The Suburban DynaPack  
Is Easy To Install In  
Almost Any Application.

Dimensions In Inches		
MODEL	A	B
DYP18	60-1/2	23-7/8
DYP24	60-1/2	23-7/8
DYP30	64-1/2	27-7/8



**Suburban DynaPack Specifications**

MODEL	COOLING			HEATING		
	Btuh	EER	Refrigerant	Input Btuh	Output Btuh	AFUE
DYPA18ACA36	17,000	9.7	R-410A	35,500	28,400	80%
DYPA18ACA48				47,500	38,000	
DYPA18ACA60				59,000	47,200	
DYPA24ACA36	23,600	9.15	R-410A	35,500	28,400	80%
DYPA24ACA48				47,500	38,000	
DYPA24ACA60				59,000	47,200	
DYPA30ACA36	28,400	9	R-410A	35,500	28,400	80%
DYPA30ACA48				47,500	38,000	
DYPA30ACA60				59,000	47,200	

Specifications subject to change without notice.  
Installation must be in accordance with local codes and regulations.

**Warranty:** The DynaPack is backed by a one year limited warranty on parts and labor and a five year limited warranty on the compressor and heat exchanger.



Electrical Data	DYPA18	DYPA24	DYPA30
Volts/Phase/Cycle	208 230/1/60		
Minimum Circuit Ampacity	12.6	17.3	20.5
Maximum Fuse/HACR breaker size	20	25	30

Compressor			
Type	Reciprocating		
Refrigerant type (HCFC)	R410A	R410A	R410A
Unit Refrigerant Charge Ounces	75	90	90
Rated load amps	8.3	10.9	13.1
Locked rotor amps	43	54	74
Maximum Continuous Current	13	17	20.5

Gas Controls and Additional Data			
Gas (specify)	Natural	Natural	Natural
Ignition system: Solid state	Direct Spark	Direct Spark	Direct Spark
Gas connection size	1/2" NPT	1/2" NPT	1/2" NPT
Condensate connection size	3/4" NPT	3/4" NPT	3/4" NPT

Motors			
Indoor motor FLA/HP/RPM	1.3/.25/1060	2.8/.5/1075	2.8/.5/1075
Condenser motor FLA/HP/RPM	0.9/.125/1075	0.9/.125/1075	1.3/.25/1075
Combustion motor FLA	0.9	0.9	0.9

**Suburban**  
**DynaPack™**

Vertical Packaged Air Conditioner Featuring Gas Heat/Electric Cooling



Fully Self-Contained Heating and Cooling System That Provides Designers and Builders with a Cost Effective Alternative to Condition Multiple Rooms.

- 1 1/2 to 2 1/2 Tons Cooling
- 36 – 60 MBTU GAS Heat
- No Outside Condensing Unit
- Slide-out Heat Exchanger Assembly
- R-410A Refrigerant
- Insulated 16 GA Coated Steel Base Pan

Ideal For Multi-Family Applications



*Designed And Built To  
Perform With Efficient Reliability.*

# DynaPack: The Cost Effective Alternative To Condition Multiple Rooms.

Featuring 1 1/2 to 2 1/2 Tons Cooling and Efficient 36 to 60 MBTU Gas Heat

## Fully Self-Contained Heating and Cooling System

Internal Washable Filter

Slide-Out Heat Exchanger Assembly for Ease of Service

Four-Speed Permanently Lubricated Motor for Maximum Airflow and Low Maintenance

R410a Refrigerant

No Outside Condensing Unit



One Unit May be Ducted for Multiple Room Conditioning

Direct Vent System

Pre-Wired and Pre-Charged at the Factory

Individually Metered and Controlled

Insulated 16 GA Coated Galvanized Steel Base Pan Eliminates Need for Field Added Platform

## Back View of DynaPack with Sleeve/Grille Attached

Air Exhaust by Condenser Fan

Air Intake To Condenser Coil

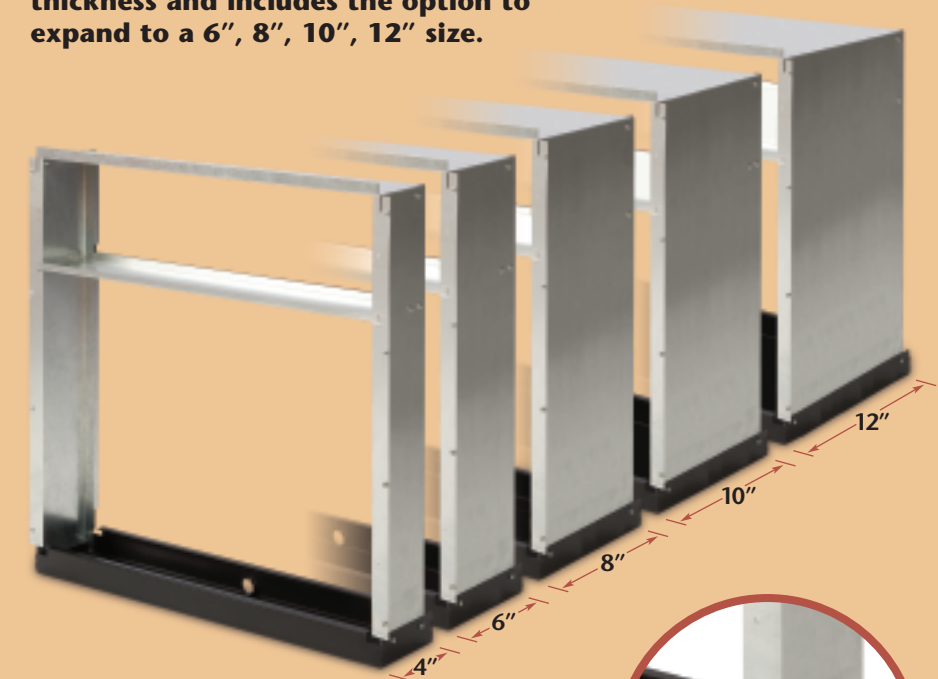
Grill Mounts Flush to Outside Wall

Optional Grille Colors Available

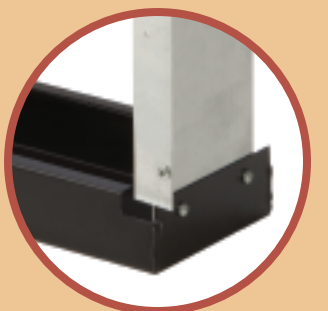


## Flexible-Width Wall Sleeve Design

The standard wall sleeve fits a 4 inch wall thickness and includes the option to expand to a 6", 8", 10", 12" size.



Reversible drain pan collects rain water that can be drained internally or externally.



Suburban Manufacturing...

The First to Offer Efficient Gas Heat in a Self-Contained Heat/Cool System, and Still the Best.