

DynaPack: The Cost Effective Alternative To Condition Multiple Rooms.

Featuring 1 1/2 to 2 1/2 Tons Cooling and Efficient 36 to 60 MBTU Gas Heat

Fully Self-Contained Heating and Cooling System

Internal Washable Filter

Slide-Out Heat Exchanger Assembly for Ease of Service

Four-Speed Permanently Lubricated Motor for Maximum Airflow and Low Maintenance

R410a Refrigerant

No Outside Condensing Unit



One Unit May be Ducted for Multiple Room Conditioning

Direct Vent System

Pre-Wired and Pre-Charged at the Factory

Individually Metered and Controlled

Insulated 16 GA Coated Galvanized Steel Base Pan Eliminates Need for Field Added Platform

Back View of DynaPack with Sleeve/Grille Attached

Air Exhaust by Condenser Fan

Air Intake To Condenser Coil

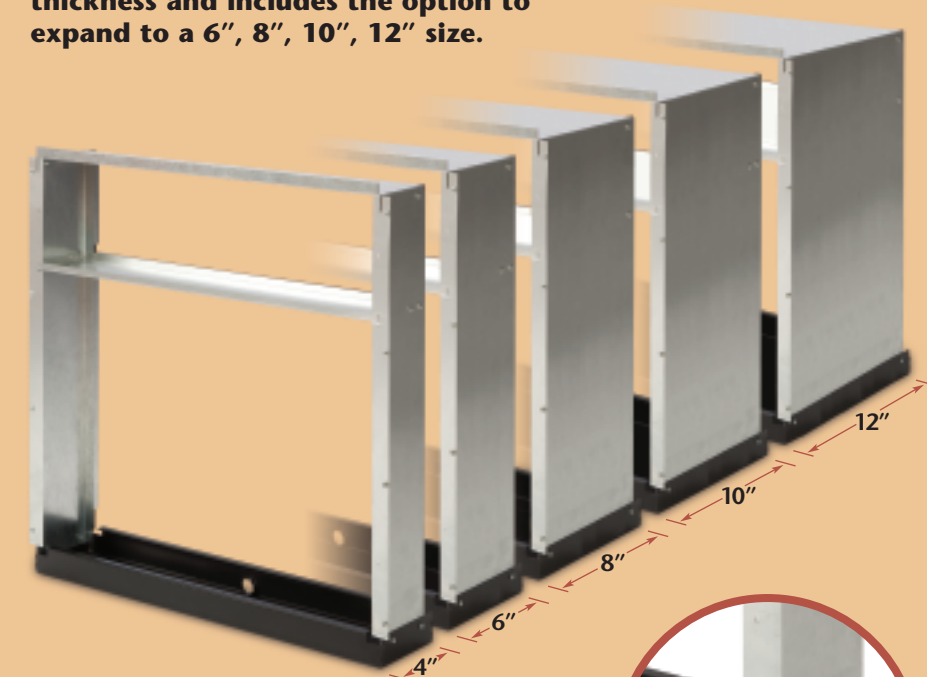
Grill Mounts Flush to Outside Wall

Optional Grille Colors Available

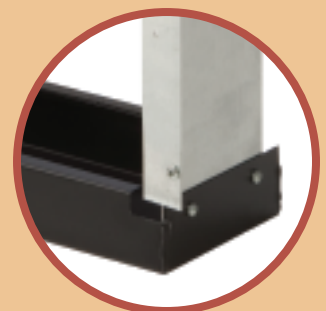


Flexible-Width Wall Sleeve Design

The standard wall sleeve fits a 4 inch wall thickness and includes the option to expand to a 6", 8", 10", 12" size.



Reversible drain pan collects rain water that can be drained internally or externally.



Suburban Manufacturing...

The First to Offer Efficient Gas Heat in a Self-Contained Heat/Cool System, and Still the Best.